



San Miguel de Cañaza
17 Ha :: \$250.000



Watch Video Now!

This 40-acre titled farm is in the San Miguel highlands above Canaza, about a 20-minute drive from town.



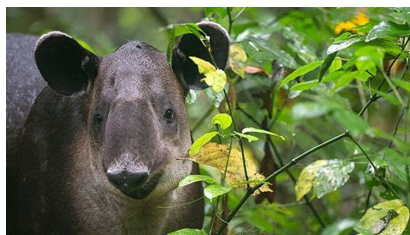
The access road is 2WD accessible year-round, and the property bounds the road for 190 meters.



With at least one stunning view site of around 3 hectares overlooking the Golfo Dulce and cleared for building, the property extends from the ridgeline all the way down to Mameyes Creek, with which it has a 200-meter boundary.



Across the tract, there are a number of other view sites not as accessible as the first one and a wide range of coverage: primary rainforest, secondary, and a little pasture.



The forest on the property is contiguous with Corcovado, and the wildlife variety is extensive. There's also plenty of planted fruit trees along the ridgeline.



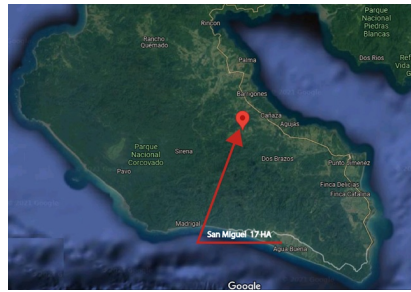
This is Forestry Reserve, 3 km from the power grid, so solar power only at this point, and has its own internal water. It is owned in a corporation, all of it for sale, or segregations offered on a case-by-case basis.



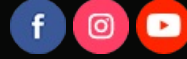
Call or write today for more information or to schedule your showing, and thank you for your preference. Osa Pen Realty, after all, remains YOUR KEY TO PARADISE!



Don't forget to take a look at our **[VIDEO!](#)**



Paul Collar
Osa Pen Realty : Your Key to
Paradise!
+506 8704-0027
land@osapenrealty.com



© 2022 Osa Pen Realty